

**DCX Antibody**  
**Rabbit mAb**  
**Catalog # AP91052**

## Specification

---

### DCX Antibody - Product Information

Application	WB, FC
Primary Accession	<a href="#">O43602</a>
Reactivity	Rat
Clonality	Monoclonal
<b>Other Names</b>	
DCX; DBCN; DC; LISX; SCLH; XLIS ; Dublin; doublecortin;	
Isotype	Rabbit IgG
Host	Rabbit
Calculated MW	40574 Da

### DCX Antibody - Additional Information

Dilution	WB~~1:1000 FC~~1:10~50
Purification	Affinity-chromatography
Immunogen	A synthesized peptide derived from human DCX
Description	Mutations in Doublecortin cause Lissencephaly (smooth brain), a neuronal migration disorder characterized by epilepsy and mental retardation. Doublecortin is a microtubule associated protein that stabilizes and bundles microtubules. A conserved doublecortin domain mediates the interaction with microtubules, and interestingly most missense mutations cluster in this domain.
Storage Condition and Buffer	Rabbit IgG in phosphate buffered saline , pH 7.4, 150mM NaCl, 0.02% sodium azide and 50% glycerol. Store at +4°C short term. Store at -20°C long term. Avoid freeze / thaw cycle.

### DCX Antibody - Protein Information

**Name** DCX

**Synonyms** DBCN, LISX

#### Function

Microtubule-associated protein required for initial steps of neuronal dispersion and cortex lamination during cerebral cortex development. May act by competing with the putative neuronal

protein kinase DCLK1 in binding to a target protein. May in that way participate in a signaling pathway that is crucial for neuronal interaction before and during migration, possibly as part of a calcium ion-dependent signal transduction pathway. May be part with PAFAH1B1/LIS-1 of overlapping, but distinct, signaling pathways that promote neuronal migration.

#### Cellular Location

Cytoplasm. Cell projection, neuron projection {ECO:0000250|UniProtKB:Q9ESI7}. Note=Localizes at neurite tips. {ECO:0000250|UniProtKB:Q9ESI7}

#### Tissue Location

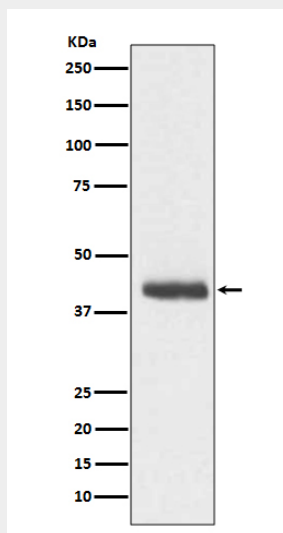
Highly expressed in neuronal cells of fetal brain (in the majority of cells of the cortical plate, intermediate zone and ventricular zone), but not expressed in other fetal tissues. In the adult, highly expressed in the brain frontal lobe, but very low expression in other regions of brain, and not detected in heart, placenta, lung, liver, skeletal muscles, kidney and pancreas

### DCX Antibody - Protocols

Provided below are standard protocols that you may find useful for product applications.

- [Western Blot](#)
- [Blocking Peptides](#)
- [Dot Blot](#)
- [Immunohistochemistry](#)
- [Immunofluorescence](#)
- [Immunoprecipitation](#)
- [Flow Cytometry](#)
- [Cell Culture](#)

### DCX Antibody - Images



Western blot analysis of DCX expression in C6 cell lysate.